

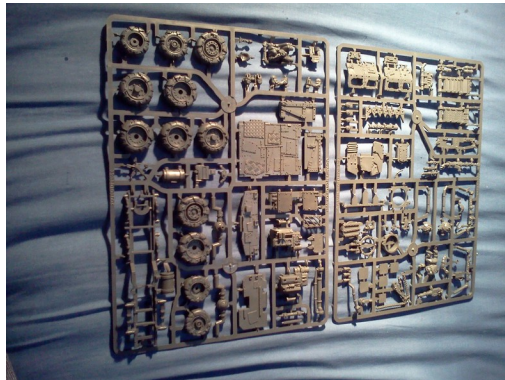


## Guide to Converting an Ork War Buggy From a Trukk Kit.

### Introduction.

At this time (April 2013) the war buggy kit available from Games Workshop is the same kit that was available during the second edition of the game well over ten years ago. Since then new orks have been released and although this remains a perfectly acceptable model it looks somewhat out of place when compared to the newer, bulkier ork models.

The aim of this project is to create an updated war buggy model using only part available in the truck kit.



### Parts Required.

1 ork truck kit - That's all.

### Tools Required.

Saw.  
Knife.  
Side cutters.  
Pin vice.  
Plastic glue.  
Superglue.

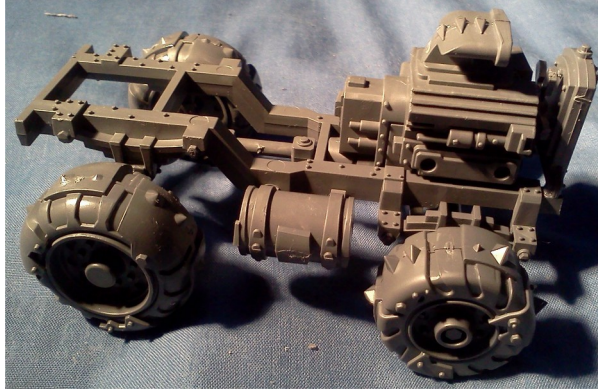
### Instructions.

#### 1 - Chassis



The chassis is shortened by sawing off sections from both ends. The front is removed as far as the first crosspiece, while the back is removed to leave the second crosspiece in place. This turns the vehicle from a six-wheeler to a four wheeler.

## 2 – Engine, Fuel Drum and Wheels



The engine block, axles, wheels and side mounted fuel drum are mounted as normal.

## 3 – Driver and Running Board



The driver is assembled as normal, but a short length of sprue is glue to the back of his seat. This will help secure him to the chassis.



The mounting pegs of the running board are cut back as far as the wider section.



The driver is then glued to the chassis, with the instrument panel being glued to the back of the engine. The sprue stuck to the back of the driver's seat will rest against the chassis cross piece. The running board is glued directly beneath the chassis.

#### 4- Gunner's Platform



The gunner's platform is constructed from a boarding ramp. This has both the axle and section extending past the reinforced side bars sawn off. The spikes beneath are also removed.

NOTE – Retain the axle. It is needed later.



The platform is then glued to the back of the chassis. This will require some trimming of bolt details on the chassis and ramp to fit.

#### 5 – Rails



The side railings are both trimmed back as far as the first indentations, producing two bent railings of different lengths.

The roll cage rail without the hanging hook is cut as shown, as far as the spike to the left and cutting into the spike on the right just past the bolt detail.



With the spikes outwards, the rails are fitted to the chassis, using the trimmed side railings for the front sections.

## 6 – Exhaust



Cut the engine-mounted section of the exhaust into four pieces as shown.  
Piece 1 – the three pipes that run into the engine. Cut just before the bend.  
Piece 2 – the short outward pointing section. Cut just before the next bend.  
Piece 3 – Cut just after the second detail

band.

Piece 4 – Everything that's left.



Now glue pieces 1 and 3 together so that the exhaust points outwards slightly. I drilled and pinned them for extra strength.



This is now glued to the engine in its normal position.

## 7 – Twin Linked Big Shoota



The perforated section of the main exhaust, including the narrower part connecting to the wider section is trimmed out to form the extra gun barrel.



The saved boarding ramp axle is used to make the breech. Cut through the axle beside one of the protruding ramp beams and remove the other beam to leave a flat edge.



The big shoota is assembled as normal, except that the sight is omitted. The exhaust is glued above the barrel and the ramp axle over the breech. These will require some trimming to fit.



The gunner can now be mounted by gluing the gun mount to the back of the driver's seat. This will require some trimming of details from the seat for the gun and the gunner's platform for the gunner's feet.

### 8 – Completion

Your ork war buggy is now complete! The vehicle can be further customised as you wish with spare parts from the trukkit kit or others, but this is the basic vehicle using only parts from the trukkit kit.



#### **Suggested changes/Upgrades:**

The twin linked big shoota could instead be made using spare big shootas from other kits or replaced with a twin linked rokket launcher.

Mudguard for the front wheels made from deth dredd shoulder pads.

Grot riggers added using spare gretchin figures – those from the stompa kit are especially useful.

Glue the hooks of the boarding ramp to the front of the vehicle as a ram bar.